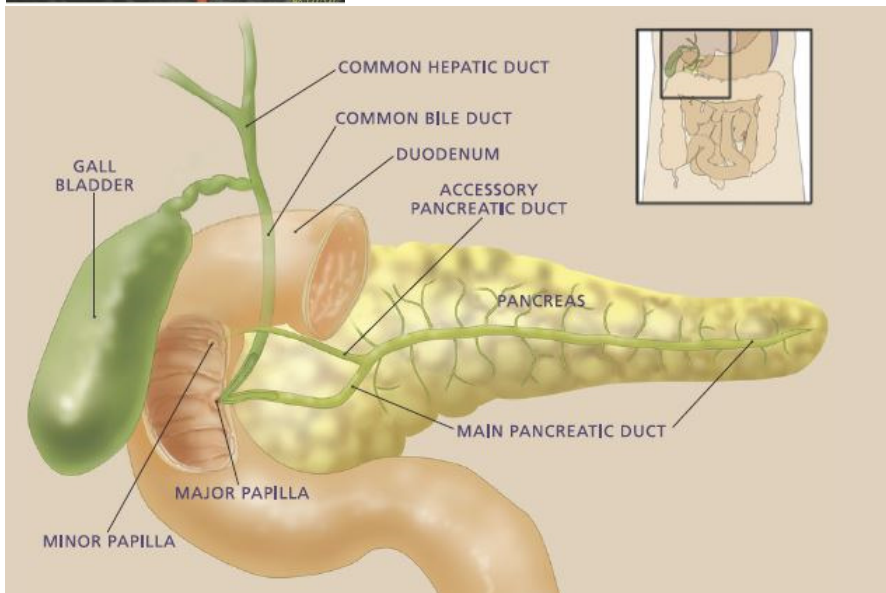
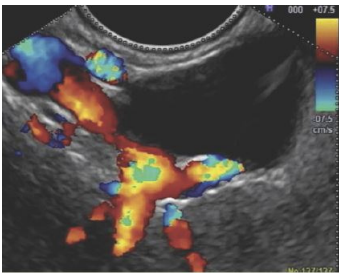


Endoscopic Ultrasonography – CPT Codes 43231- 45392

The American Society for Gastrointestinal Endoscopy (ASGE) works to ensure that adequate methods are in place for gastroenterology practices to report and obtain fair and reasonable reimbursement for procedures, tests and visits. To assist practices in understanding and implementing GI-specific coding, ASGE has developed coding sheets. The purpose of the coding sheet is to provide a high-level overview to support practices in their coding and reimbursement for 2018.



What is an Endoscopic Ultrasonography (EUS)?

Endoscopic ultrasonography (EUS) is used to examine the esophageal and stomach linings as well as the walls of the upper and lower gastrointestinal tract. The upper tract consists of the esophagus, stomach and duodenum; the lower tract includes the colon and rectum. EUS is also used to study other organs that are near the gastrointestinal tract, including the lungs, liver, gall bladder and pancreas.

The CPT[®] codes in this series identify services performed during an endoscopic ultrasonography.

Coding Tip - Beginning **January 1, 2017**, moderate sedation is no longer included in payment for gastrointestinal endoscopy services. If you provide moderate (conscious) sedation in conjunction with GI procedures you must now bill sedation separately with the appropriate moderate sedation HCPCS code(s) 99151, 99152, +99153, 99155, 99156, +99157 and G0500. This is important as the moderate sedation service was previously included in the relative value units (RVUs) for gastrointestinal endoscopy services. Failure to bill moderate sedation codes separately will result in loss of revenue for these services. ASGE suggests that you consult your individual payer policies for further information on moderate sedation billing processes.

2018 CPT[®] Changes - Gastroenterology



CPT Codes for Endoscopic Ultrasonography (EUS) in the Digestive Tract

CPT Code	Descriptor
43231	Esophagoscopy, flexible, transoral; with endoscopic ultrasound examination
43232	Esophagoscopy, flexible, transoral; with transendoscopic ultrasound-guided intramural or transmural fine-needle aspiration/biopsy(s)
43237	Esophagogastroduodenoscopy, flexible, transoral; with endoscopic ultrasound examination limited to the esophagus, stomach or duodenum, and adjacent structures
43238	Esophagogastroduodenoscopy, flexible, transoral; with transendoscopic ultrasound-guided intramural or transmural fine-needle aspiration/biopsy(s), (includes endoscopic ultrasound examination limited to the esophagus, stomach or duodenum, and adjacent structures)
43240	Esophagogastroduodenoscopy, flexible, transoral; with transmural drainage of pseudocyst (includes placement of transmural drainage catheter[s]/stent[s], when performed, and endoscopic ultrasound, when performed)
43242	Esophagogastroduodenoscopy, flexible, transoral; with transendoscopic ultrasound-guided intramural or transmural fine-needle aspiration/biopsy(s), (includes endoscopic ultrasound examination of the esophagus, stomach, and either the duodenum or a surgically altered stomach where the jejunum is examined distal to the anastomosis)
43253	Esophagogastroduodenoscopy, flexible, transoral; with transendoscopic ultrasound-guided transmural injection of diagnostic or therapeutic substance(s) (eg, anesthetic, neurolytic agent) or fiducial marker(s) (includes endoscopic ultrasound examination limited to the esophagus, stomach, and either the duodenum or a surgically altered stomach where the jejunum is examined distal to the anastomosis)
43259	Esophagogastroduodenoscopy, flexible, transoral; with endoscopic ultrasound examination, including the esophagus, stomach, and either the duodenum or a surgically altered stomach where the jejunum is examined distal to the anastomosis
44406	Colonoscopy through stoma; with endoscopic ultrasound examination, limited to the sigmoid, descending, transverse, or ascending colon and cecum and adjacent structures
44407	Colonoscopy through stoma with transendoscopic ultrasound-guided intramural or transmural fine-needle aspiration/biopsy(s), includes endoscopic ultrasound examination limited to the sigmoid, descending, transverse, or ascending colon and cecum and adjacent structures
45341	Sigmoidoscopy, flexible; with endoscopic ultrasound examination
45342	Sigmoidoscopy, flexible; with transendoscopic ultrasound guided intramural or transmural fine-needle aspiration/biopsy(s)
45391	Colonoscopy, flexible; with endoscopic ultrasound examination, limited to the rectum, sigmoid, descending, transverse, or ascending colon and cecum and adjacent structures
45392	Colonoscopy, flexible; with transendoscopic ultrasound-guided intramural or transmural fine-needle aspiration/biopsy(s), (includes endoscopic ultrasound examination limited to the rectum, sigmoid, descending, transverse, or ascending colon and cecum and adjacent structures)

2018 CPT[®] Changes - Gastroenterology



Summary of Upper GI EUS Code Distinctions

Visual Endoscopy Extent	EUS Extent	Report Code	EUS/FNA Extent	Report Code
Esophagus	Esophagus	43231	Esophagus	43232
Esophagus, stomach, duodenum/jejunum	Esophagus, stomach, OR duodenum/jejunum	43237	Esophagus, stomach, OR duodenum/jejunum	43238
Esophagus, stomach, duodenum/jejunum	Esophagus, stomach, AND duodenum/jejunum	43259	Esophagus, stomach, AND duodenum/jejunum	43242